


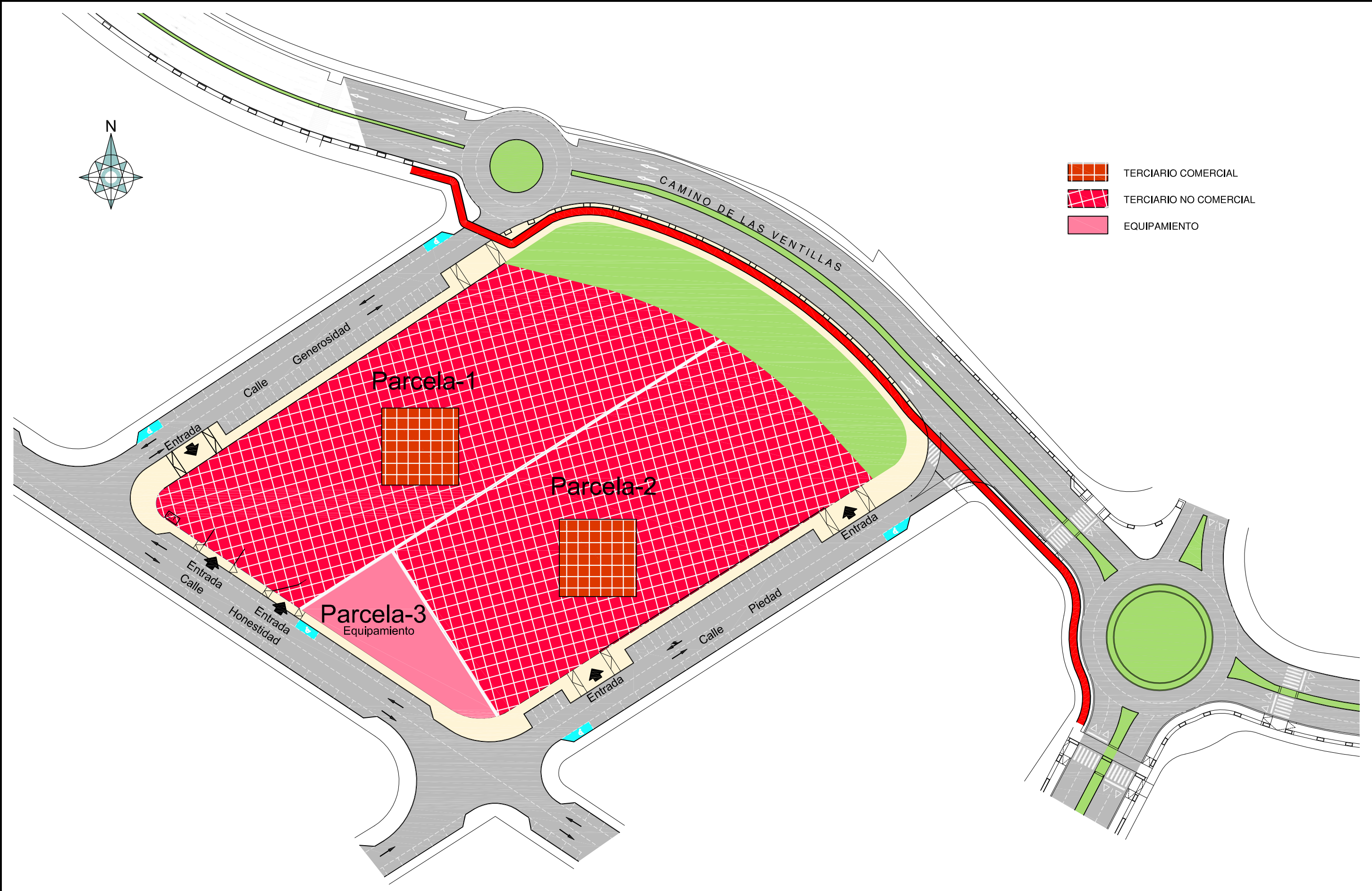
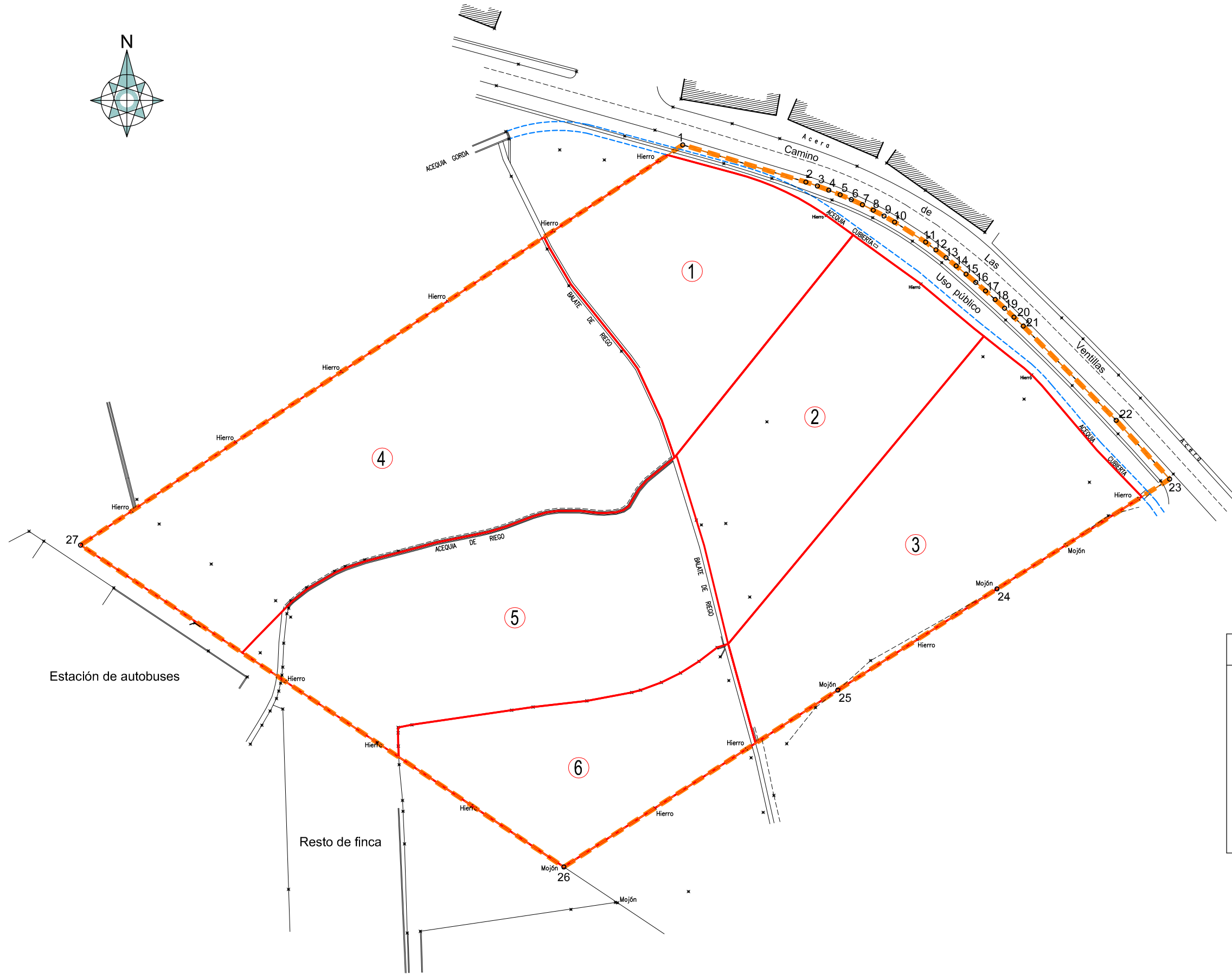
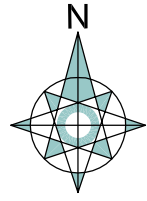


-  Terciario Comercial
-  Terciario No Comercial
-  Equipamiento

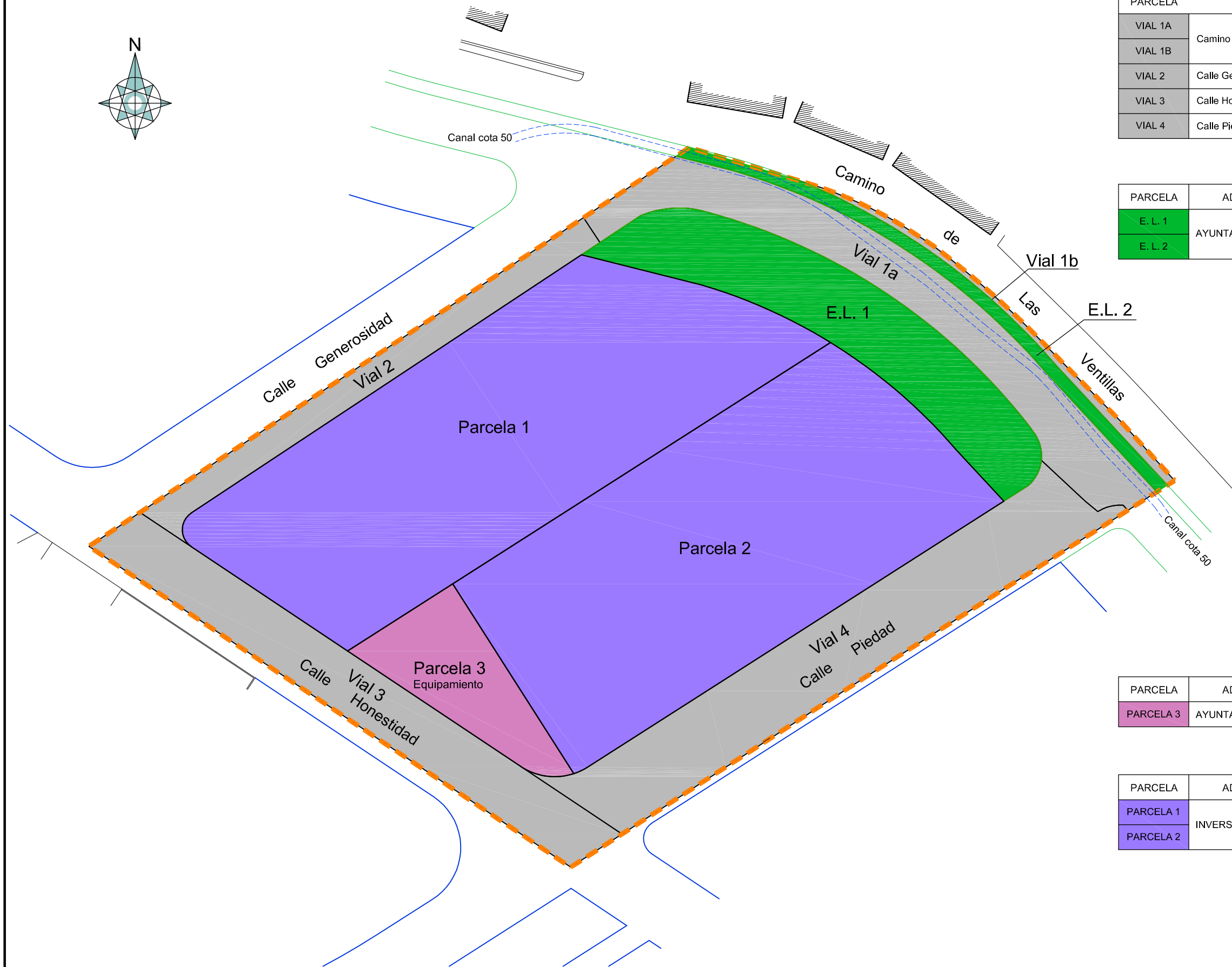
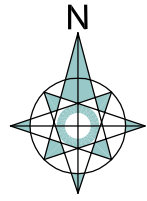




ÁMBITO U.E.  
Cordenadas UTM. ETRS89 Huso 30

Vértice	X	Y
1	454502.33	4066410.87
2	454532.35	4066401.80
3	454535.17	4066400.85
4	454537.96	4066399.82
5	454540.72	4066398.72
6	454543.45	4066397.53
7	454546.15	4066396.27
8	454548.80	4066394.94
9	454551.42	4066393.53
10	454554.00	4066392.04
11	454561.58	4066387.16
12	454564.08	4066385.26
13	454566.56	4066383.32
14	454569.01	4066381.35
15	454571.43	4066379.35
16	454573.83	4066377.32
17	454576.20	4066375.25
18	454578.54	4066373.15
19	454580.85	4066371.03
20	454583.14	4066368.87
21	454585.39	4066366.68
22	454608.06	4066343.70
23	454621.11	4066329.37
24	454578.99	4066302.59
25	454540.16	4066277.90
26	454473.32	4066234.77
27	454355.42	4066313.26

TITULAR	FINCA	SUPERFICIE
INVERSIONES LIBERRI S.L.	①	2.740'21 M2.
	②	2.740'21 M2.
	③	3.998'80 M2.
	④	6.665'66 M2.
	⑤	4.875'79 M2.
	⑥	2.338'92 M2.
	USO PÚBLICO	996'63 M2.
	TOTAL U. E.	24.356'22 M2.



PARCELA	ADJUDICATARIO	USO	SUPERFICIE
VIAL 1A	CAMINO LAS VENTILLAS	AYUNTAMIENTO DE MOTRIL	1.884'02 M2.
VIAL 1B			176'93 M2.
VIAL 2			935'84 M2.
VIAL 3			1.952'60 M2.
VIAL 4			2.637'49 M2.
TOTAL CESIONES VIARIO			7.586'88 M2.

PARCELA	ADJUDICATARIO	USO	SUPERFICIE
E. L. 1	AYUNTAMIENTO DE MOTRIL	ESPACIOS LIBRES	2.075'79 M2.
E. L. 2			426'55 M2.
TOTAL CESIONES ESPACIOS LIBRES			2.502'34 M2.

PARCELA	ADJUDICATARIO	USO	SUPERFICIE
PARCELA 3	AYUNTAMIENTO DE MOTRIL	EQUIPAMIENTO	1.000'00 M2.
TOTAL EQUIPAMIENTO			1.000'00 M2.

PARCELA	ADJUDICATARIO	USO	SUPERFICIE
PARCELA 1	INVERSIONES ILIBERRI S.L.	TERCIARIO COMERCIAL Y NO COMERCIAL	6.676'00 M2.
PARCELA 2			6.591'00 M2.
TOTAL PARCELAS EDIFICABLES			13.267'00 M2.

TOTAL U.E. MOT-6	24.356'22 M2.
------------------	---------------